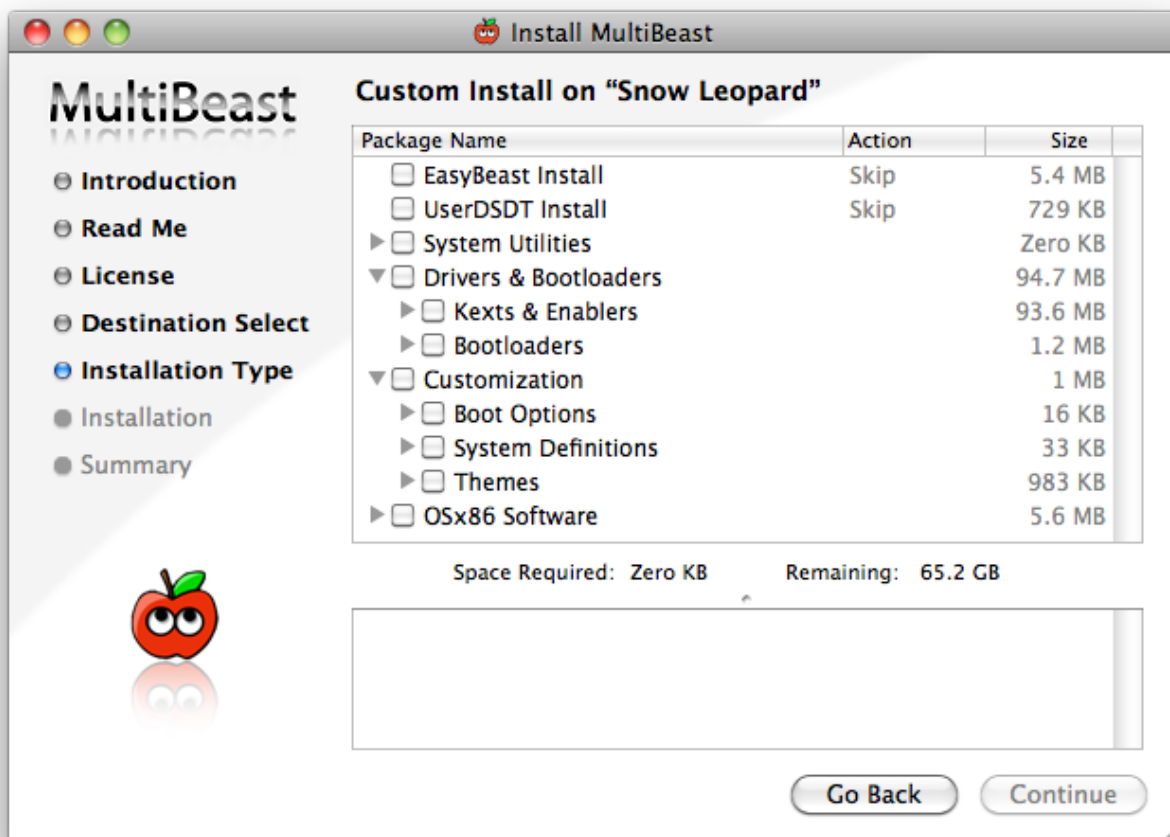




MultiBeast



MultiBeast is an all-in-one post-installation tool designed to enable boot from hard drive, and install support for Audio, Network, and Graphics. It contains two different complete post-installation solutions: EasyBeast and UserDSDT. In addition it includes System Utilities to rebuild caches and repair permissions and a collection of drivers, bootloaders, boot time config files and handy software.

This document will reference all of the features of MultiBeast, as described inside the installer itself. The iBoot + MultiBeast guide is available at the [tonymacx86 Blog](http://tonymacx86.com).

Please read all of the descriptions carefully. You may run MultiBeast as often as you like, but keep in mind that it will not uninstall items, just overwrite them.

tonymacx86 & MacMan
www.tonymacx86.com



iBoot

Plus MultiBeast

1. Follow all [Tips & Recommendations](#)
2. Install using iBoot + Retail DVD
3. Boot with iBoot
4. Set up Computer
5. Run Combo Update - DON'T REBOOT
6. Run MultiBeast
7. Reboot

Thanks to the [Chameleon](#) team, [netkas](#), [Project OS X](#), [Cheetha.net](#), hnak and [cVaD](#) for their contributions that makes this tool possible.

Additional thanks to the tonymacx86 community for their testing and contributions to this work. Special thanks to [Lnx2Mac](#), adamsmasher and thelostswede.



tonymacx86.com



EasyBeast Install

EasyBeast is a DSDT-free solution for Core, Core 2 or Core i systems. It installs all of the essentials to allow your system to boot from the hard drive. Does not include any Network or Sound drivers or Graphics support besides GraphicsEnabler.

Includes the latest version of Chimera, FakeSMC, EvOreboot, JMicron36xATA, JMicron36xSATA, LegacyAppleRTC, NullCPUPowerManagement, USB Rollback, tonymacx86 Remixed theme. 32-Bit com.apple.boot.plist, and MacPro3,1 sbios.plist. Install with System Utilities tasks.



UserDSDT Install

UserDSDT is a solution for those who have their own pre-edited DSDT.aml on the desktop. Installs your DSDT.aml, the latest version of Chimera, FakeSMC, 32-Bit com.apple.boot.plist and MacPro3,1 sbios.plist. The system will be bootable from the hard drive and ready for sleep with all hardware recognized in System Profiler. Does not include any Network or Sound drivers or Graphics support besides GraphicsEnabler. Install with System Utilities tasks.

System Utilities

Repairs Disk Permissions and/or Rebuilds Kext Caches. Run after installing any choices above, installing any kexts in Advanced Options or manually deleting kexts.

Rebuild Caches

Rebuild Caches on /Extra/Extensions & /System/Library/Extensions. Use after installing or deleting kexts.

Repair Permissions

Repair Permissions on boot volume. Please be patient- this can take a good 4 minutes or more.

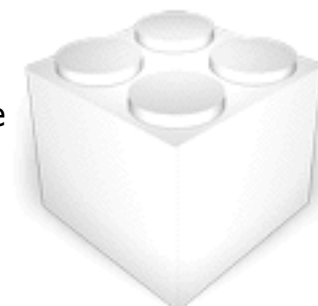


Drivers & Bootloaders

Collection of drivers, bootloaders, patched kernels, boot time config files and handy software. If you're unsure, don't install anything in here. Advanced users may skip EasyBeast and UserDSDT to do an à la carte install using this collection.

Kexts & Enablers

Kexts or kernel extensions provide additional functionality to the operating system. The kexts contained here provide either enhanced hardware support or are mandatory for non-DSDT based systems. Be sure to read the descriptions carefully before installation.





Audio

Collection of kexts to enable the on-board Audio on your system. Make sure to read the descriptions carefully and only install the correct files for your audio codec.

Realtek ALC8xx

Enables audio for motherboards featuring the Realtek ALC888, ALC887/888b, ALC889, ALC885/889a and ALC892 high-definition audio codecs.

ALC8xxHDA

MacMan's Unified Audio Injector for Realtek ALC888, ALC887/888b, ALC889, ALC885/889a and ALC892 high-definition audio codecs. If you are not using a modified DSDT, you must also use a HDAEnabler for your specific codec. Installed in /Extra/Extensions. Install with System Utilities tasks.

AppleHDA Rollback

Replaces the current AppleHDA.kext with an unmodified 10.6.2 AppleHDA.kext to restore full functionality for Realtek ALC888, ALC887/888b, ALC889, and ALC892 high-definition audio codecs. on systems running 10.6.3 or later. Installed in /System/Library/Extensions. Install with System Utilities tasks.

Non-DSDT HDAEnabler

Required for ALC8xxHDA.kext to work WITHOUT a DSDT and enable audio on motherboards featuring the Realtek ALC888, ALC887/888b, ALC889, ALC885/889a and ALC892 high-definition audio codecs. Make sure you only choose ONE HDAEnabler option. Installed in /System/Library/Extensions. Install with System Utilities tasks.

Universal

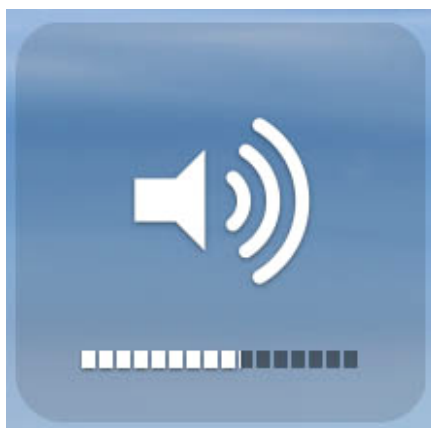
Enables audio for most codecs. Uses VoodooHDA which is an open source audio driver for devices compliant with the Intel High Definition Audio (HDA) specification, based primarily on code from the FreeBSD hdac driver. It is intended as an Intel-only replacement for AppleHDA. Enables sound without DSDT patching on 32/64-bit systems. Installed in /System/Library/Extensions. Install with System Utilities tasks.

VoodooHDA 0.2.1 / 0.2.2

Original VoodooLabs branch.

VoodooHDA 0.2.56 / 0.2.61 / 0.2.72

Project OS X branch version 0.2.61. 32/64bit. Installed in /System/Library/Extensions. Includes VoodooHDA.prefPane installed in /System/Library/PreferencePanels. Install with System Utilities tasks.





Disk

Collection of kexts that provide enhanced hardware support for optical and disk drives.

IOAHCIBlockStorageInjector

Makes drives appear as internal. Installed in /Extra/Extensions.

Install with System Utilities tasks.

JMicron 36x (aka GSATA)

MacMan's JMicron 36x Suite of Kexts. Choose only the kexts you need.

Jmicron36x ATA

Enables the IDE port on the JMicron 36x (aka GSATA) chips.

Supports optical and hard drives. Installed in /Extra/Extensions.

Install with System Utilities tasks.

Jmicron36x eSATA

Provides support for the SATA ports on JMicron 36x (aka GSATA) chips. Drives connected to these ports show on the desktop as External and can be hot swapped. Installed in /Extra/Extensions. Install with System Utilities tasks.

Jmicron36x SATA

Provides support for the SATA ports on JMicron 36x (aka GSATA) chips. Drives connected to these ports show on the desktop as Internal and can NOT be hot swapped. Installed in /Extra/Extensions. Install with System Utilities tasks.



Graphics

Install to enable QE/Ci full Graphics acceleration. Only install if the default GraphicsEnabler=Yes is not working correctly. Install with System Utilities tasks.

Enablers

Collection of kexts to enable Graphics Controllers on your system. Can be used instead of or in addition to GraphicsEnabler.

NVEnabler

Injects NVIDIA Graphics card information to enable full acceleration. Also known to solve TV-OUT and mirroring issues on NVIDIA cards. Installed in /Extra/Extensions.

ATI 1.6.34.13 Drivers

Updated ATI kexts from the Mac OS X 10.6.7 Update for iMac (early 2011). Backs up current kexts to ~/Desktop/ATI-Backup before installing. Installs in /System/Library/Extensions.

NVIDIA 256.02.05f01 Drivers

Updated NVIDIA kexts from the Mac OS X 10.6.7 Update for iMac (early 2011). Backs up current kexts to ~/Desktop/NVIDIA-Backup before installing. Equivalent to tonymacx86 NVIDIA Update 2.0. Installs in /System/Library/Extensions.

ATI 48xx Device Injector

Device ID injector that provides all device IDs for ATI 48xx cards. Installed in /Extra/Extensions.

ATI 48xx Patch

Netkas.org packages to get QE/Ci on Radeon HD 48xx cards for 10.6.3-10.6.7. Installs patched ATI4800Controller and ATIRadeonX2000 to /System/Library/Extensions.



Miscellaneous

Collection of miscellaneous kexts that provide enhanced hardware support or mandatory for systems not using a DSDT. Be sure to read the descriptions carefully before installation. Install with System Utilities tasks.

ElliottForceLegacyRTC.kext

Prevents a CMOS reset on reboot without a DSDT.

EvOreboot

If you don't have a DSDT, shutdown and reboot do not work without this kext. Installed in /Extra/Extensions.

FakeSMC

FakeSMC.kext is the only absolutely mandatory kext, and is required for booting the system. Original by netkas, new branch by Project OS X. Installed in /Extra/Extensions.

FakeSMC Plugins

Installs the following FakeSMC plugins to allow software access to hardware monitors: ACPIMonitor.kext, IntelThermal.kext and SuperIOFamily.kext. Credit to Project OS X. Installed in /Extra/Extensions.

IOUSBFamily Rollback

Replaces the current IOUSBFamily.kext and IOUSBMassStorageClass.kext with the unmodified 10.6.2 and 10.6.4 versions to restore full functionality to non-DSDT systems running 10.6.3 or later. Installed in /System/Library/Extensions.

NullCPUPowerManagement

Disables AppleIntelCPUPowerManagement.kext to prevent kernel panic without proper HPET DSDT edits. Installed in /Extra/Extensions.

USB 3.0 - NEC/Renesas

Enables USB 3.0 ports for systems using the NEC/Renesas D720200 controller. LaCie driver patched by modbin. Installed in /System/Library/Extensions.

Voodoo PS/2 Controller

Enables non-USB keyboard/mouse. Installed in /Extra/Extensions.

Voodoo Trackpad

Enables PS/2 based touchpads. 32-bit only. Installs VoodooPS2Trackpad.kext in /System/Library/Extensions/VoodooPS2Controller.kext/Contents/PlugIns/.





Network

Collection of kexts to enable on-board Ethernet. Install only ONE.

Ln2Mac's RealtekRTL81xx Ethernet

Enables Realtek 81xx Ethernet controllers by launching Ln2Mac's Installer. Installed in /System/Library/Extensions.

Hnak's AppleIntelE1000e Ethernet

Enables Intel 825xx ethernet controllers. hnak's port of the e1000.sourceforge.net Intel Wired Ethernet for Linux driver. 32/64 bit. Installed in /System/Library/Extensions.

Realtek Gigabit Ethernet 2.0.6

Official Realtek 2.0.6 driver for 81xx Ethernet controllers. Installed in /System/Library/Extensions/IONetworkingFamily.kext/Contents/PlugIns



Bootloaders

Install ONE of the following options to make your drive bootable. Not necessary for a EasyBeast or UserDSDT install.

Chimera v1.3.0 r760

MacMan's branch of Chameleon 2.0 RC5. This version includes support for the latest CPUs and updated GraphicsEnabler code for ATI and NVIDIA GPUs. Does not include any themes.

Chameleon 2.0 RC5 Prerelease

Chameleon 2.0 RC5 r699. The prerelease includes updated CPU detection code that includes the i3, improved memory detection, and updated GraphicsEnabler code. Does not include any themes.

Chameleon 2.0 RC5 - ATI Experimental

Chameleon 2.0 RC5 r744 by Kabyl with experimental ATI GraphicsEnabler support. Does not include any themes.

Chameleon 2.0 RC5 – Sandy Bridge

Chameleon 2.0 RC5 r709 by valv with experimental Sandy Bridge support. Does not include any themes.



Customization

Click the triangle to expand and view the collection of boot time config files and system customization options.

Boot Options

Contains pre-edited or scripts to edit `/Extra/com.apple.boot.plist` files to enable/disable special bootloader features at startup.

32-bit Apple Boot Screen

Pre-edited standard 32-bit `com.apple.boot.plist`. Contains `GraphicsEnabler=Yes`, enabling most NVIDIA and ATI Graphics cards, standard Apple Boot Screen and enables 32-bit kernel.

32-bit GraphicsEnabler=No

Pre-edited standard 32-bit `com.apple.boot.plist`. Contains `GraphicsEnabler=No`, standard Apple Boot Screen and enables 32-bit kernel.

64-bit Apple Boot Screen

Pre-edited standard 64-bit `com.apple.boot.plist`. Install ONLY if using a patched DSDT. Contains `GraphicsEnabler=Yes`, enabling most NVIDIA and ATI Graphics cards, standard Apple Boot Screen and enables 64-bit kernel.

64-bit GraphicsEnabler=No

Pre-edited standard 64-bit `com.apple.boot.plist`. Contains `GraphicsEnabler=No`, standard Apple Boot Screen and enables 64-bit kernel.

PCI Root ID Fix

Adds `PCIRootUID=1` to Kernel Flags in `/Extra/com.apple.boot.plist`

Instant Menu

Adds `Instant Menu=Yes` or replaces `Timeout=n` in `/Extra/com.apple.boot.plist`





System Definitions

Contains pre-edited smbios.plist files that will identify your system as a specific Mac model. Installed by default by EasyBeast, and UserDSDT installations.

iMac

These pre-edited smbios.plist files will identify your system as an iMac.

Mac Pro

These pre-edited smbios.plist files will identify your system as a Mac Pro.

MacBook Pro

These pre-edited smbios.plist files will identify your system as a MacBook Pro.

Themes

Themes for bootloader GUI customization.

Chameleon RC5 Default

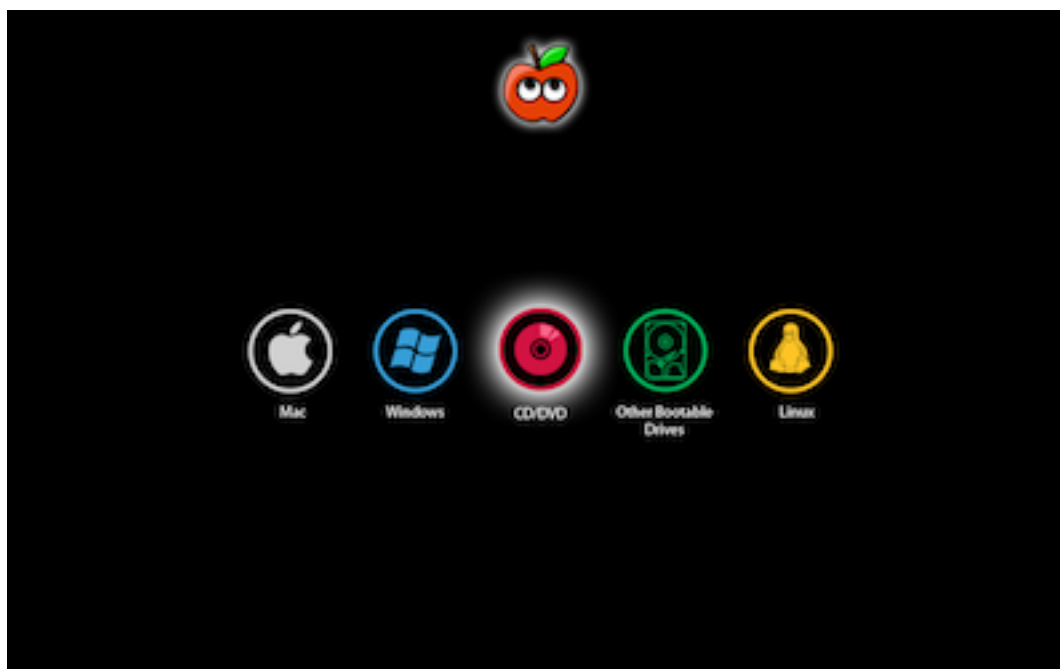
Default Chameleon RC5 theme. Optimized for standard screens. Installed in /Extra.

tonymacx86 Classic

tonymacx86 theme. Optimized for standard and/or widescreen displays. Installed in /Extra.

tonymacx86 Remixed

tonymacx86 theme remixed by complx. Optimized for standard and/or widescreen displays. Installed in /Extra.



OSx86 Software



Helpful OSx86 Utilities and Tools. Installed in Applications folder.

Kext Helper b7

The drag n' drop kext installer Kext Helper b7 lets you install multiple kexts at once, and also repairs kext permissions and creates a script to tag cache rebuild. Installed in Applications folder.

Kext Utility

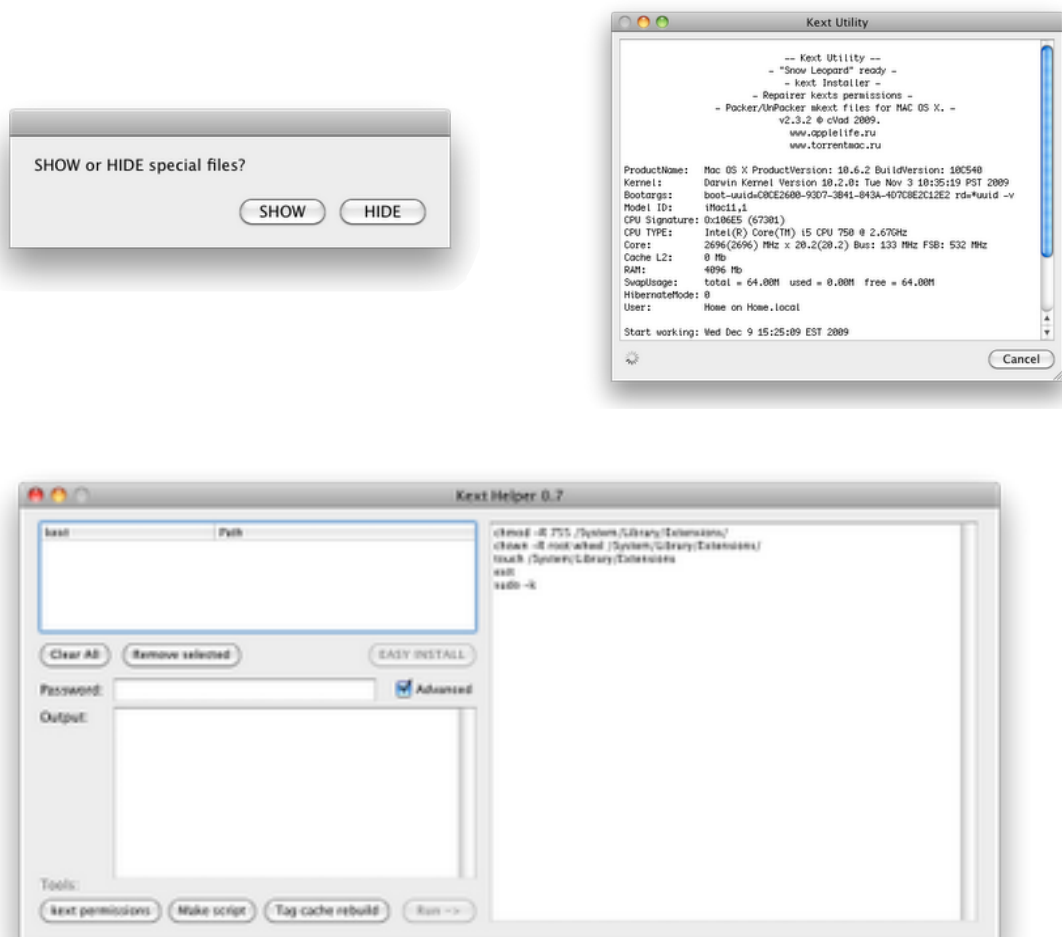
Installs kexts one at a time, and does 'full service' Extensions.mkext creation. The best feature of Kext Utility is its interface to create caches- you simply drag the Extensions folder directly on top of the icon in Applications folder or Dock. Installed in Applications folder.

MSR Tools

MSR Tools is a thermal sensor program that shows CPU info. In addition to live stepping, it also shows temperature readings, CPU MHZ values and mVolt values. NOTE: 32-bit only. Installed in Applications folder.

ShowAllFiles

ShowAllFiles enables display of all hidden files in Finder. Very useful for locating hidden boot files, mach_kernel, etc... Installed in Applications folder.





This tool was created for your personal use and may not be sold or re-distributed without the express written consent of tonymacx86 LLC.

This tool is provided "as is" without warranties of any kind, either expressed or implied, including, but not limited to, the implied warranties of merchantability and fitness for a particular purpose. The entire risk as to the quality and performance of this tool is with you. Should the tool prove defective, you assume the cost of all necessary servicing, repair or correction.

Please consider a [contribution](#) to support further MultiBeast development. Thanks in advance!

Contribute

The copyright to the original works contained within are retained by the original creators.

